



Basecamp Desolation Sound

Strata Lot 16 Ocean View



BASECAMP
DESOLATION SOUND

Jason Zroback
BC Landpro Group
jason@landquest.com
1 (604) 414-5577

Jamie Zroback
BC Landpro Group
jamie@landquest.com
1 (604) 483-1605



Marketing British Columbia to the World®



“The Source” for Oceanfront, Lakefront,
Islands, Ranches, Resorts & Land
in British Columbia

www.landquest.com

Basecamp Desolation Sound

Strata Lot 16 Ocean View

PROPERTY DETAILS

Listing Number:	23044
Price:	\$529,000
Taxes:	To be determined
Size:	3.5 acres

LOCATION

8 km north of Lund.

DESCRIPTION

We are excited to introduce to you Basecamp, a place where adventure begins within the surroundings of world class natural amenities. The location is stunning with dramatic mountains, islands, and inlets that make this property the definition of "West Coast" wilderness.



Basecamp is situated at the gateway to world renowned boating destination, Desolation Sound just north of Lund. It has proximity to Savary, Hernando, Cortes Islands and Refuge Cove providing an array of adventures right at your doorstep.

Basecamp is a rare collection of 28 lots over 150 acres of forested, waterfront property, ranging from 3.5-7 acres at the northernmost entrance to the

Sunshine Coast Trail, just 30 minutes from Powell River.

Only 4 lots are being released in this second phase as ownership is waiting for clarity on the marina tenure application to release the balance of parcels at Basecamp. Simply put, the value of properties such as this is enhanced significantly with the addition of a marina, and plan to sell the remaining phases sometime next year.

Ownership has applied for marina tenure with the government authorities. Should this application be approved, moorage will be offered to each parcel owner in order of their purchase date (first-in, first-option). Moorage will be offered on a variety of lease terms, at rates comparable to those found in Lund.

While each parcel has its own special characteristics, outlook, and topography, they all share access to 400 metres of pristine, private beachfront, an incredible place to relax and retreat. Enjoy paddle boarding in the private bay, star gazing from a beach side bonfire. You can also explore world class hiking trails, dirt biking, mountain biking, and numerous activities from the property.

Be the first to invest in this exciting new subdivision, this rare retreat is the ultimate place for you and your family to unplug and connect with nature. Peaceful solitude with Nancy's Bakery, groceries, or the Boardwalk Restaurant just 10-15 minutes away. Discover Basecamp, a place to recharge and live life the way it was meant to be.

Answers to FAQ can be found on the Basecamp website, www.basecampds.com/faq.

DIRECTIONS

Contact Listing Agent.

AREA DATA

Copeland Island Provincial Marine Park

This property is situated near an area known locally as The Ragged Islands or Copeland Islands Group. The 437-hectare archipelago comprises of four islands and 14 islets that protect narrow Thulin Passage, the main passageway for boats and kayakers traveling between the Discovery Islands and Desolation Sound.

Wilderness camping and fabulous kayaking attracts outdoor enthusiasts to this group of small, moss-covered rocky islands. Other leisure pursuits in the area include swimming, fishing, snorkeling, and scuba diving. The Copeland Islands and Savary Island lie offshore from Lund on the Malaspina Peninsula of the Sunshine Coast. You can see the white sandy beaches of Savary beckoning in the distance. The Copelands lie out of sight to the north, 2 km northwest of Lund and southwest of the property.

Desolation Sound Provincial Marine Park

Desolation Sound Provincial Marine Park (8,256 hectares) is British Columbia's largest marine park. This includes more than 60 km of shoreline, several offshore islands and a gradually rising upland that contains a number of lakes, waterways and waterfalls. Unwin Lake, a 173-hectare body of fresh water, is the park's largest. Set back to the north and east, Coast Mountains soar to more than 2,400 metres. The warm waters surrounding the area teem with sea life. Ideal for swimming, scuba diving and feasting on your catch of the day, salmon, cod, prawns, crab, clams, and oysters. Plenty other tasty morsels lie beneath on the ocean's floor. To acquire them you must put on your scuba gear and get a little wet, or you could take a short drive by boat or car to the Laughing Oyster Restaurant at the head of Okeover Inlet, which is one, if not the best, place to eat in the overall area of Powell River.

Lund

South of the property is the historic community of Lund, which was named after a city in Sweden. It was established in 1899 when the Thulin Brothers started to build the hotel, which is still in use today. Recently the hotel has changed ownership and has seen a major renovation. For most of the early years Lund served as a port for fishermen. Today Lund thrives on its attraction from tourists seeking the neighboring Gulf Islands and marine parks.

RECREATION

Boating, endless sightseeing, fishing, scuba diving, hiking, and kayaking.

MAP REFERENCE

50° 2'53.37"N and 124°49'27.08"W

BOUNDARIES

Please see mapping section, all boundaries are approximate.

SERVICES

None.

ZONING

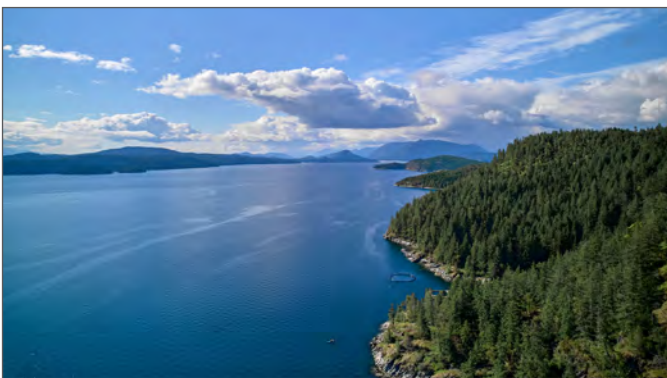
Rural Residential
Qathet Regional District Electoral Area A Official Community Plan Bylaw No. 500-2015.

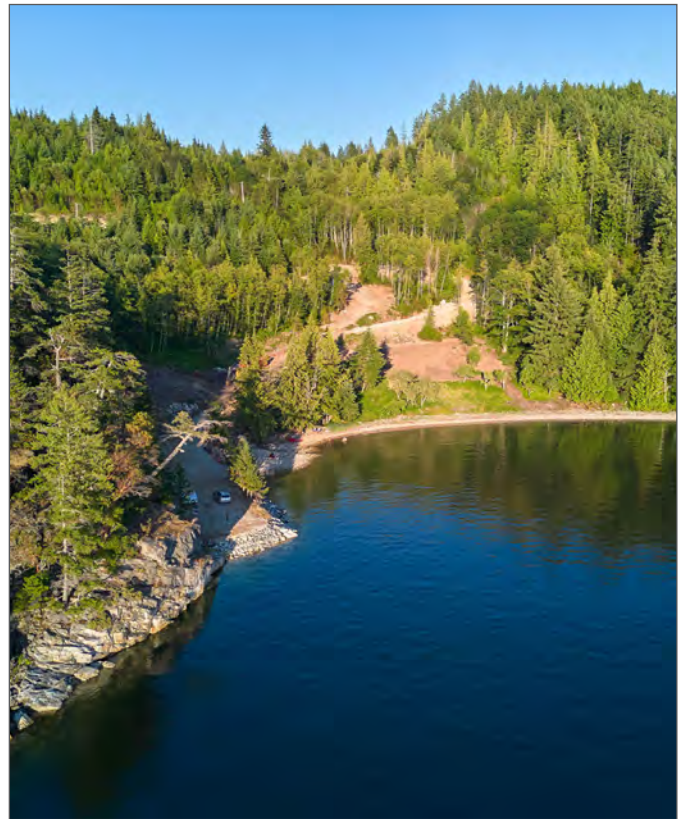
Additional zoning information can be found on the Qathet Regional District website.

LEGAL

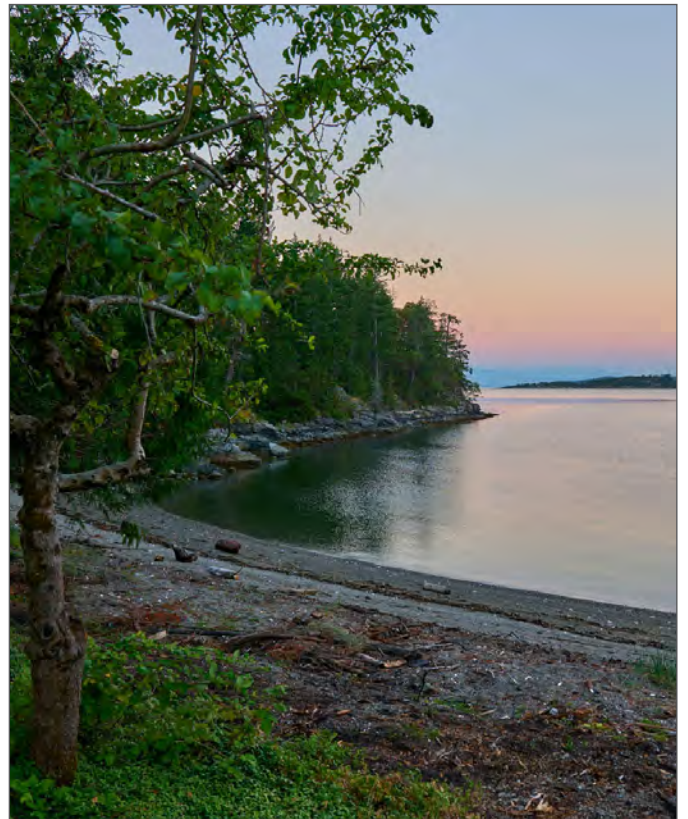
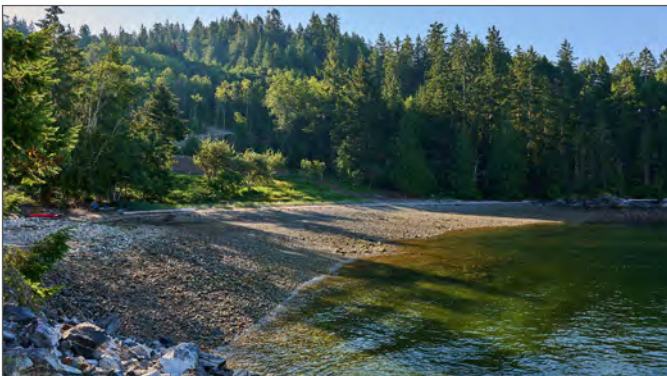
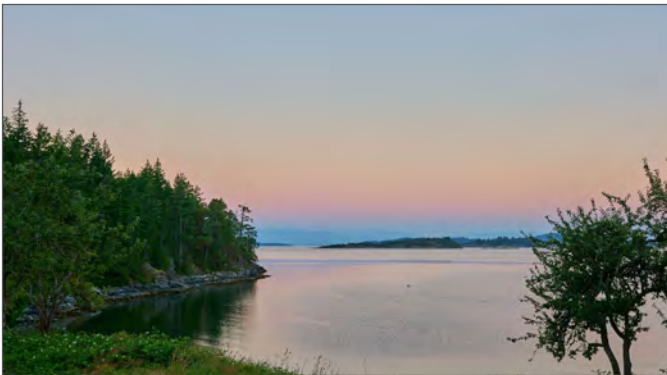
Strata Lot 16, District Lot 3781 Group 1 New Westminster District, Strata Plan EPS9033 together with an interest in the Common Property in proportion to the unit entitlement of the Strata Lot as shown on Form V

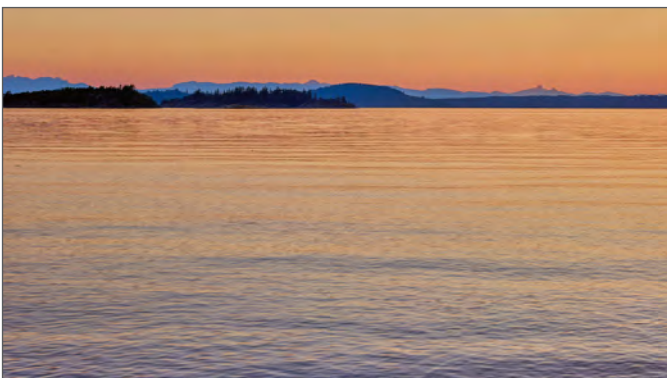
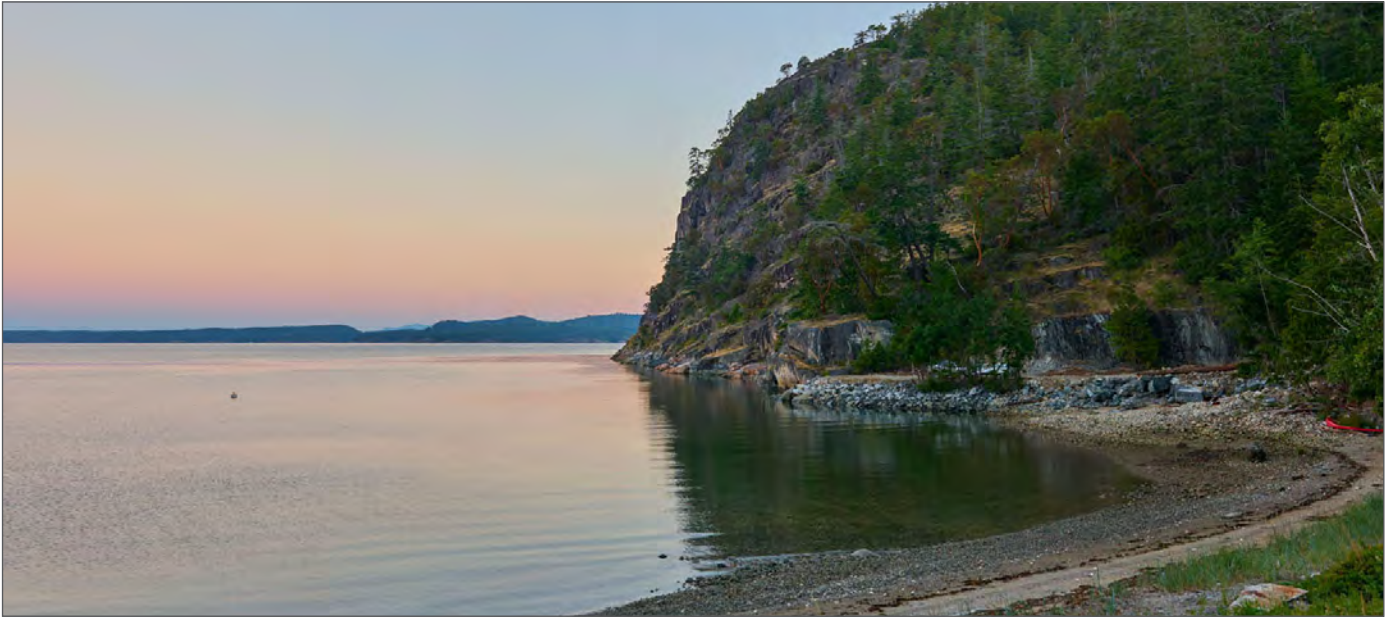
PID 032-032-986

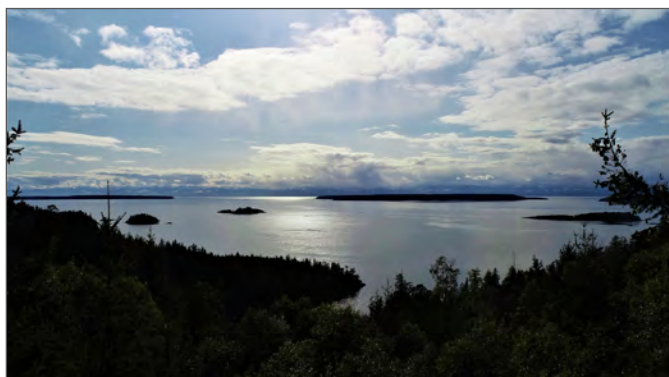


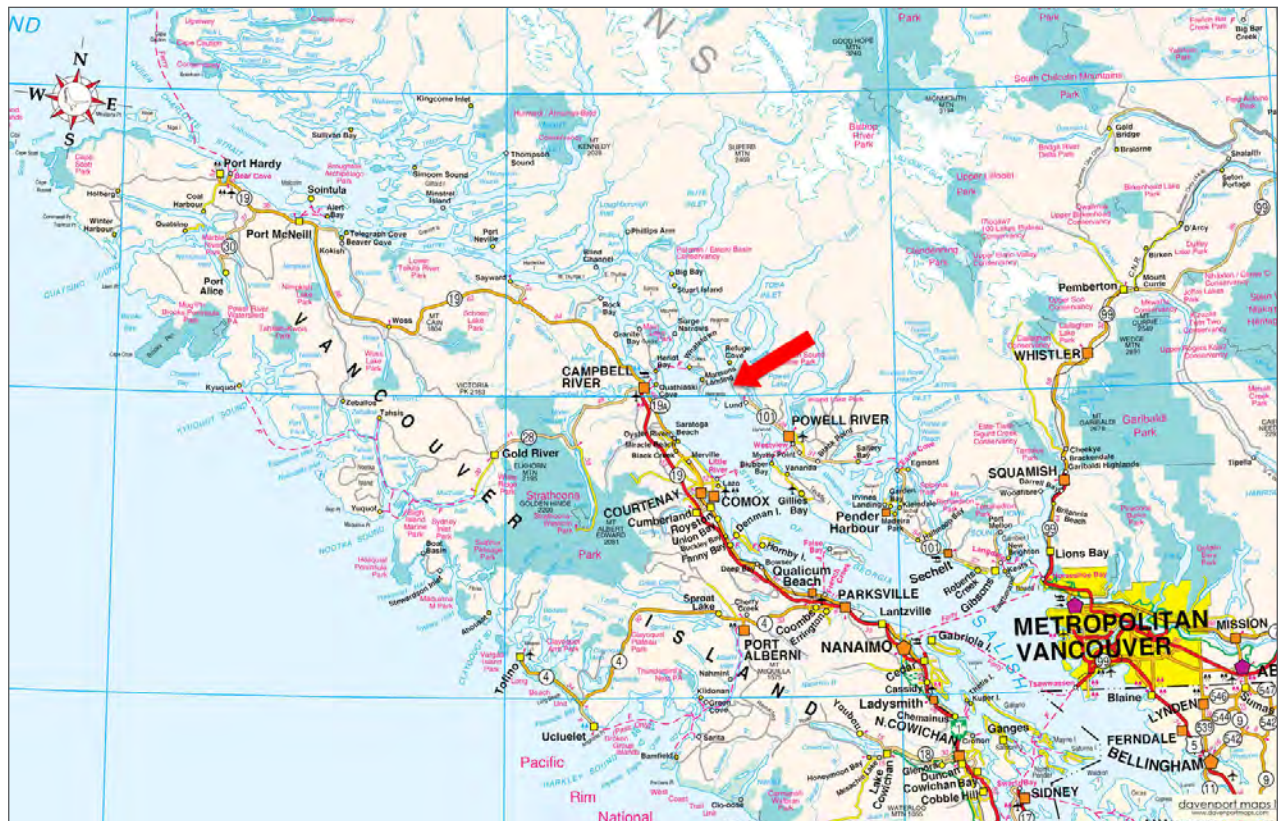
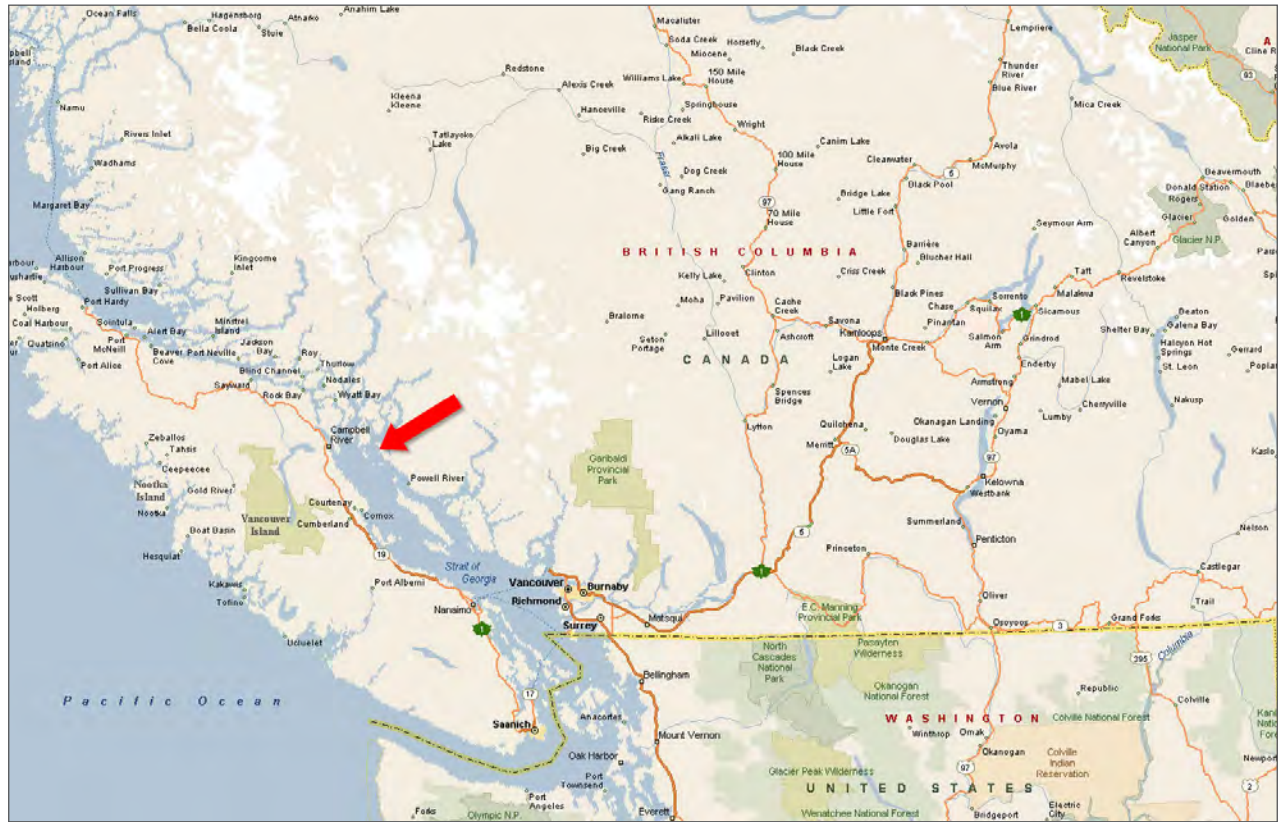


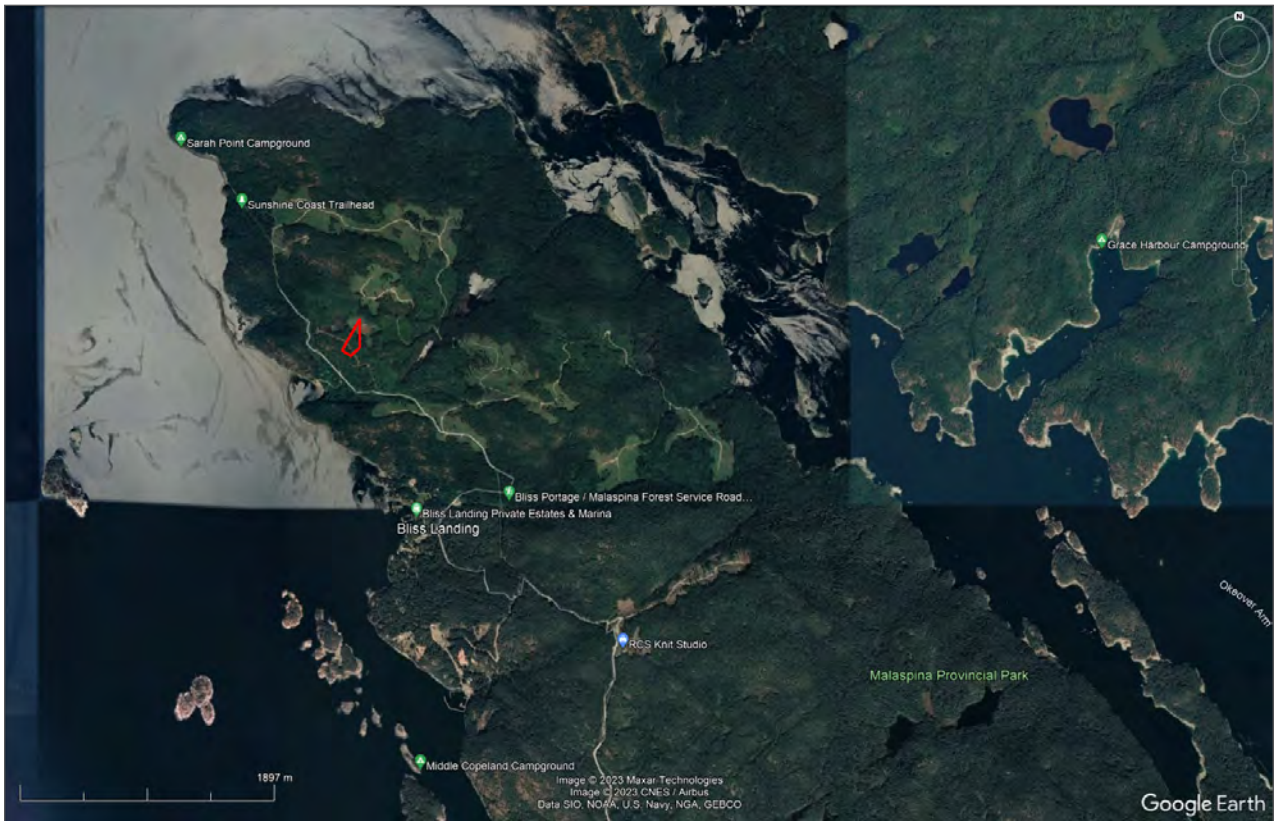
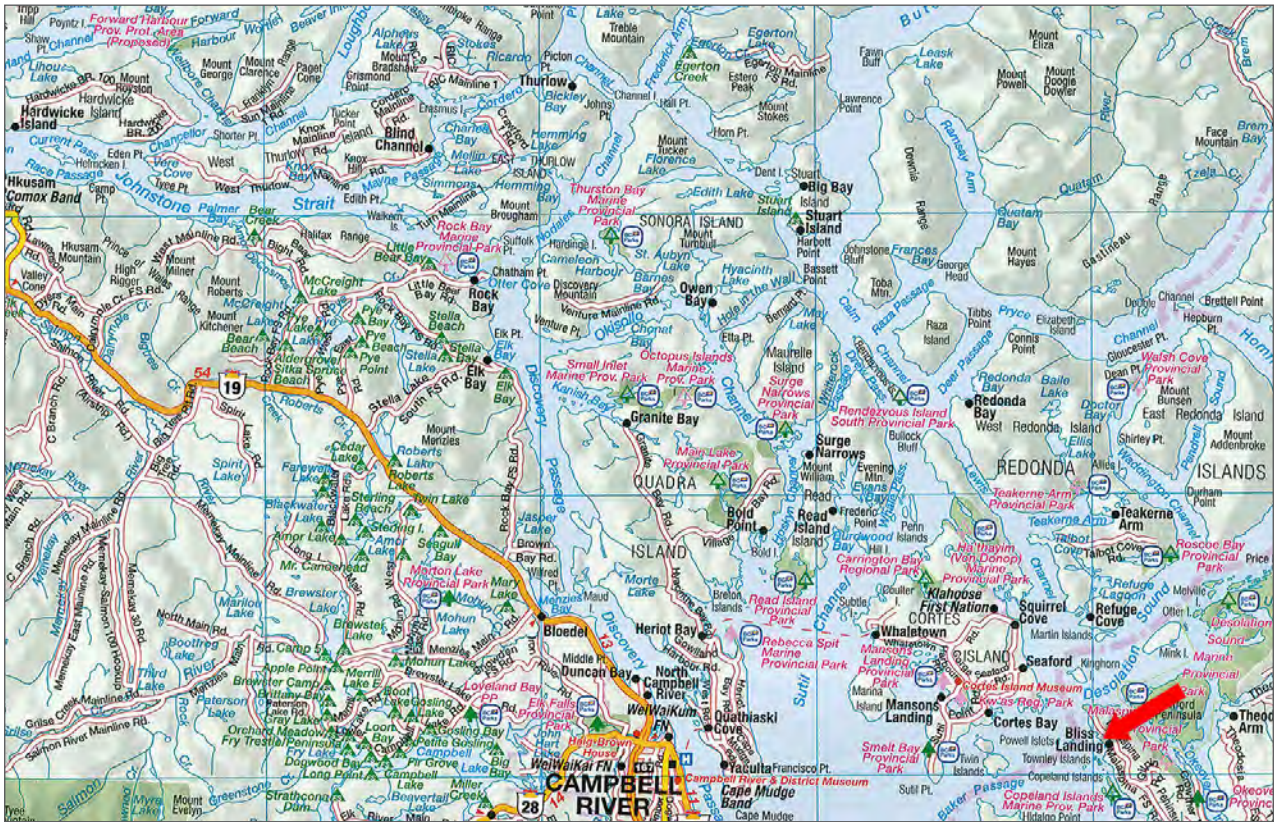


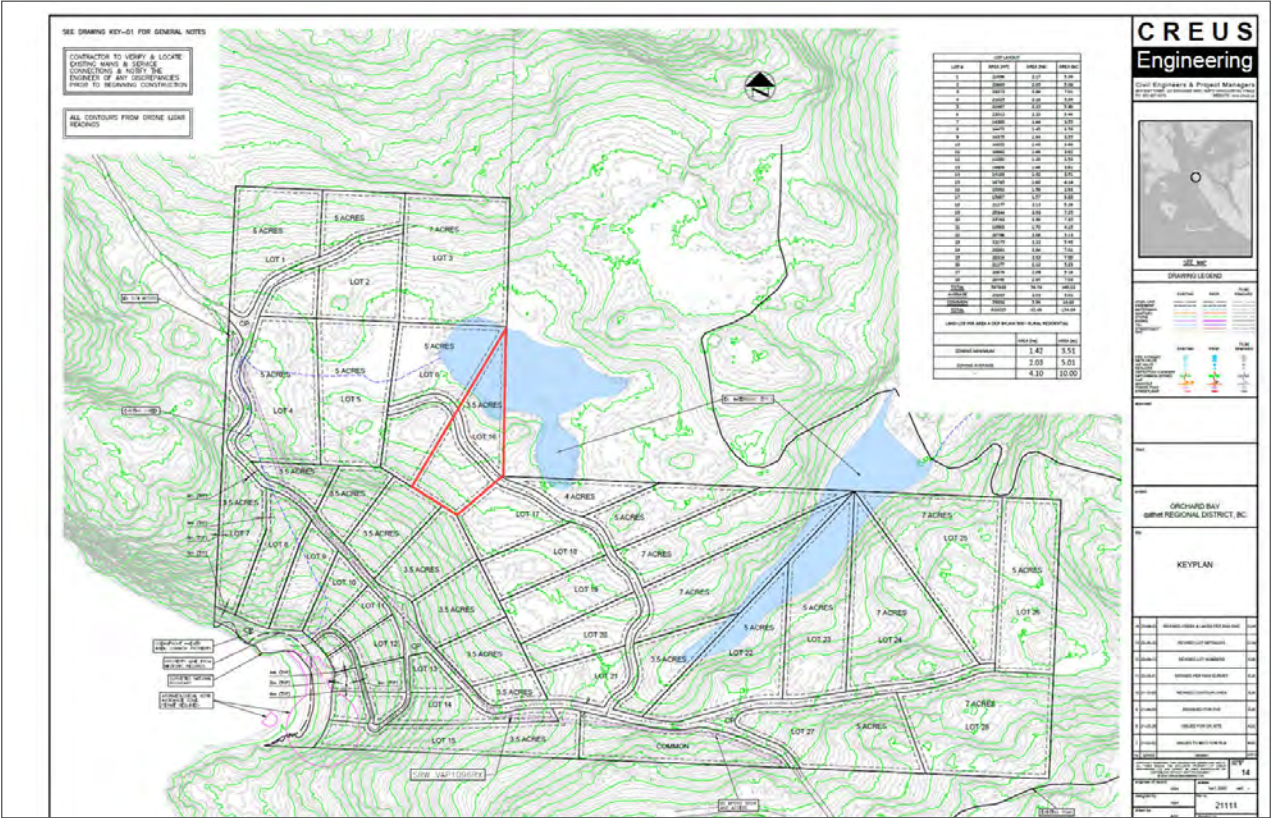


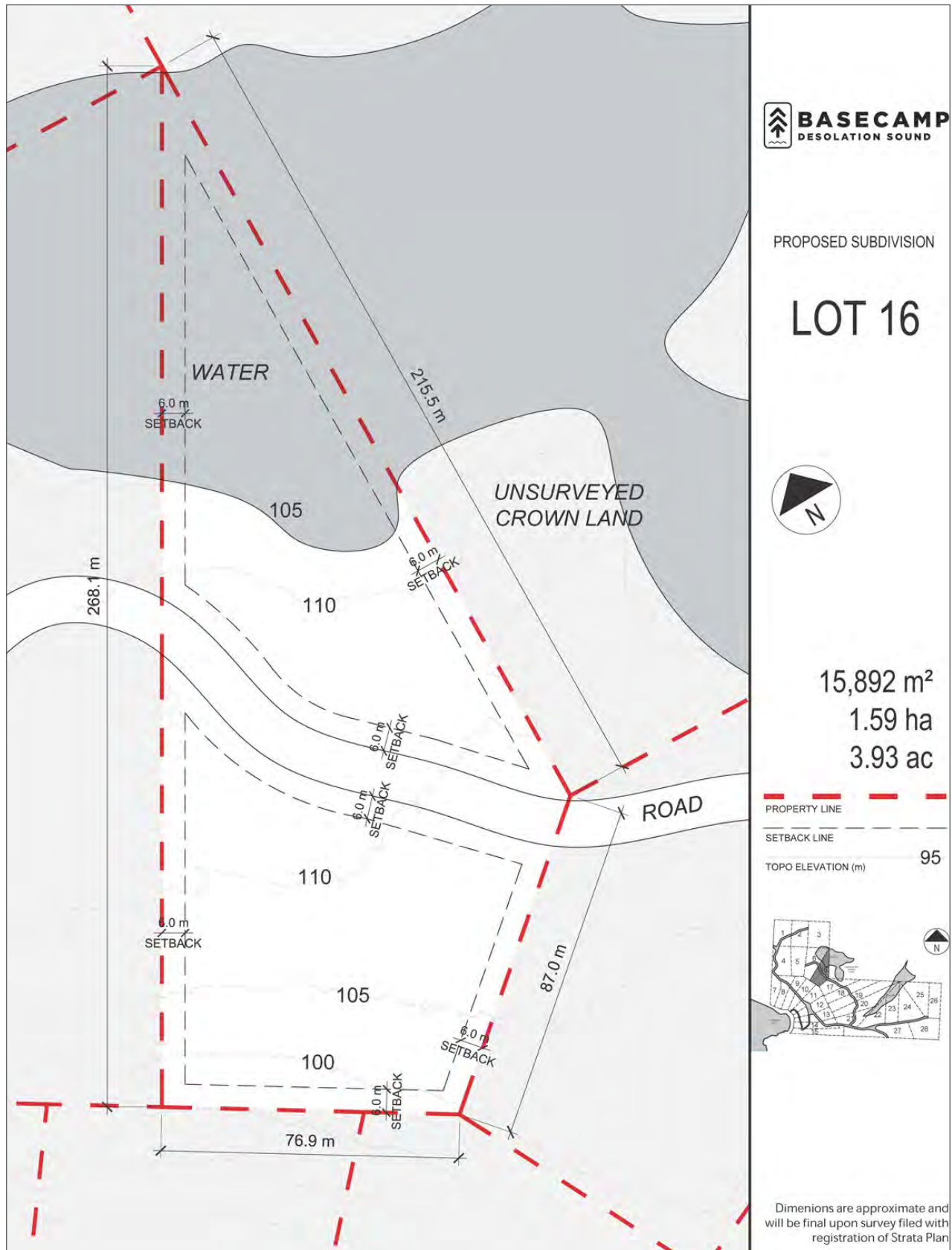












[illegible]



Marketing British Columbia to the World®



www.landquest.com



Jason Zroback

BC Landpro Group
jason@landquest.com
1 (604) 414-5577



Jamie Zroback

BC Landpro Group
jamie@landquest.com
1 (604) 483-1605

LandQuest® Realty Corporation
101 - 313 Sixth Street
New Westminster, BC V3L 3A7

Phone: (604) 664-7630 Fax: (604) 516-6504
Toll Free: 1-866-558-5263 (LAND)